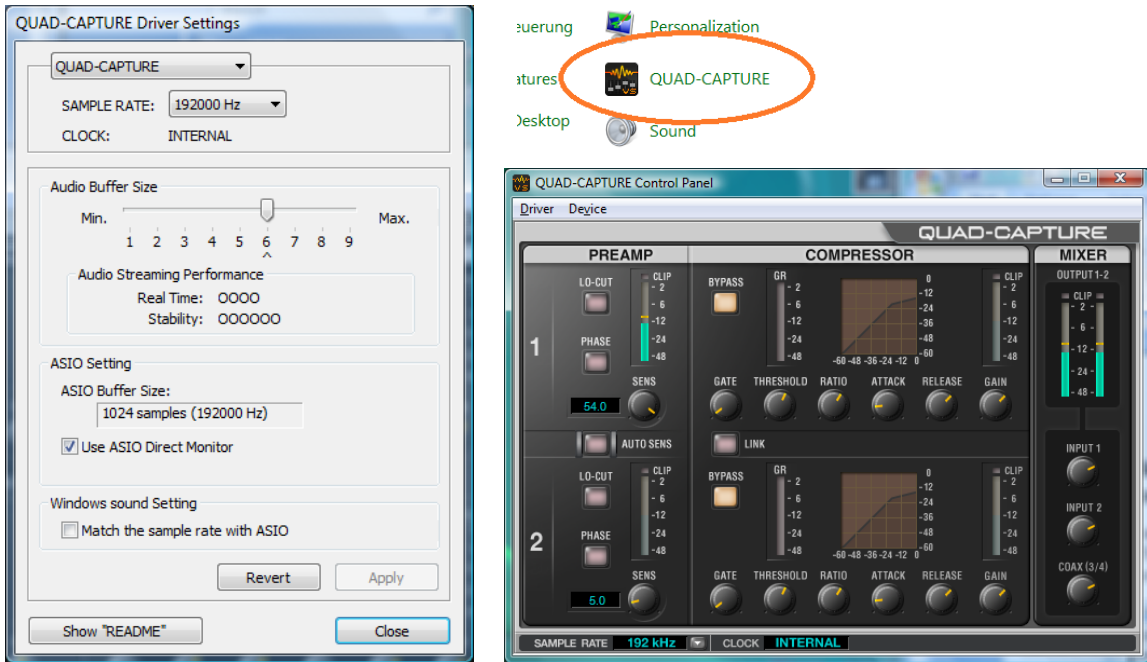
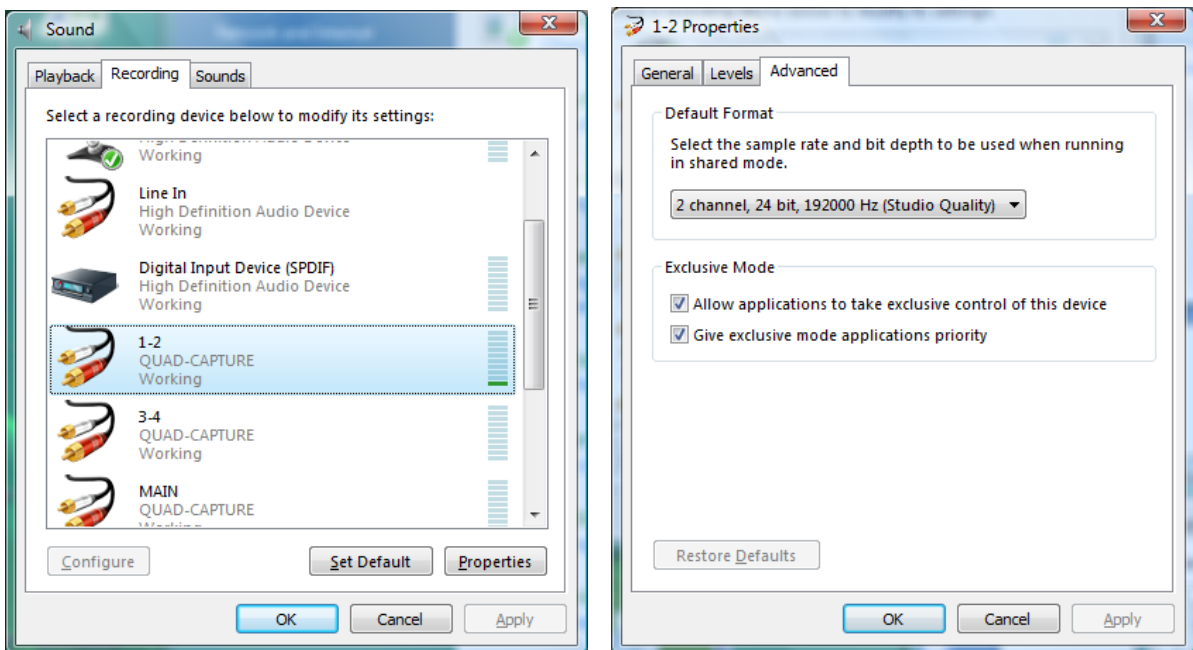


# Setting up the Roland QUAD-CAPTURE audio interface for recording ultrasound

After installing the QUAD-CAPTURE device driver software first launch the **QUAD-CAPTURE Control Panel** dialog box from the Windows Control Panel (select the “classic view” or “large icons”), goto the command Driver/Driver Settings... and select the sample rate of 192000 Hz (note that this setting is saved on the physical USB device and not on the computer):

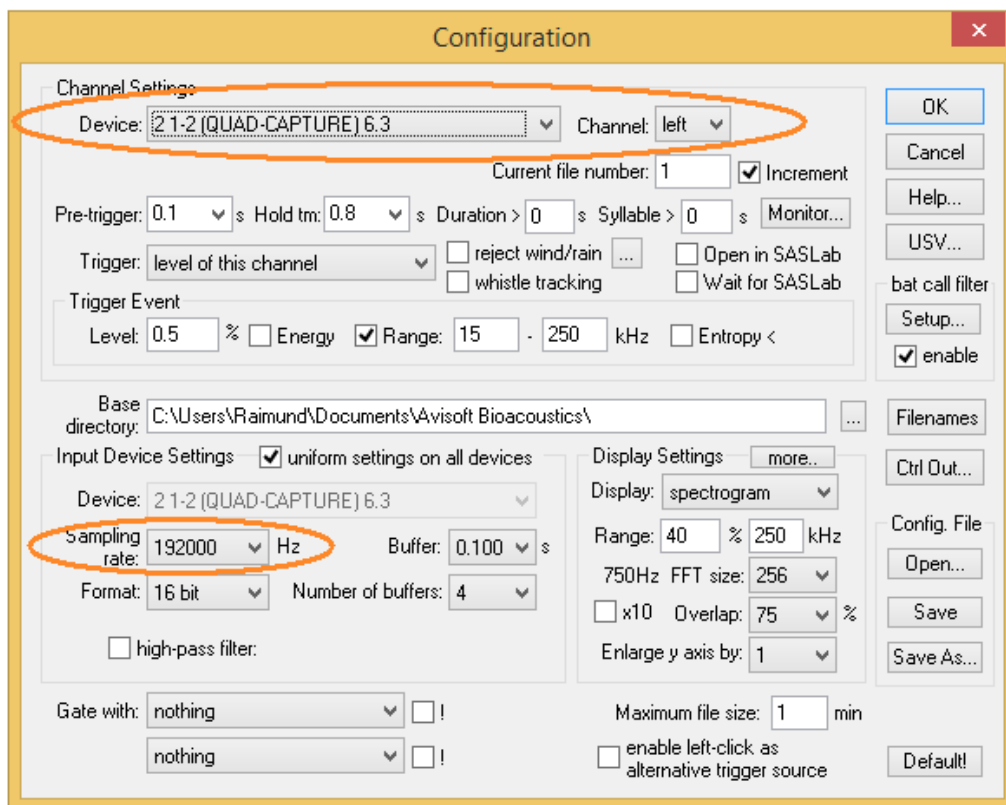


On Windows Vista/7/8/8.1 the selected sample rate should then also appear on the Windows Control Panel (Start>Control Panel>Hardware and Sound>Sound>Recording>1-2 QUAD-CAPTURE>Properties>Advanced):



On the RECORDER software, the QUAD-CAPTURE device “1-2 (QUAD-CAPTURE) 6.3” must be selected from the Device list box. Note that there are three individual logic devices associated with the Quad-Capture unit (**1-2**, **3-4** and **MAIN**), where only the **1-2** entry represents the two analog microphone inputs at the front panel. For single-channel operation, the left channel (which corresponds to the **INPUT 1L** microphone input socket on the front panel of the unit) should be selected.

The sampling rate of 192000 Hz must be selected here as well:



In order to provide power to the Avisoft ultrasound microphone, it is necessary to set the **PHANTOM** switch on the back side of the audio interface to the **48V** position. The **GROUND LIFT** switch should be set to the **NOR** position and the **Hi-Z (INPUT 1)** to the **OFF** position.



The USB audio interface has two microphone inputs (**INPUT 1L** and **INPUT 2R**). It is therefore necessary to attach the microphone to the correct input channel. This would usually be **INPUT 1L** if the (default) *left Channel* has been selected from the above Configuration dialog box of the RECORDER software.